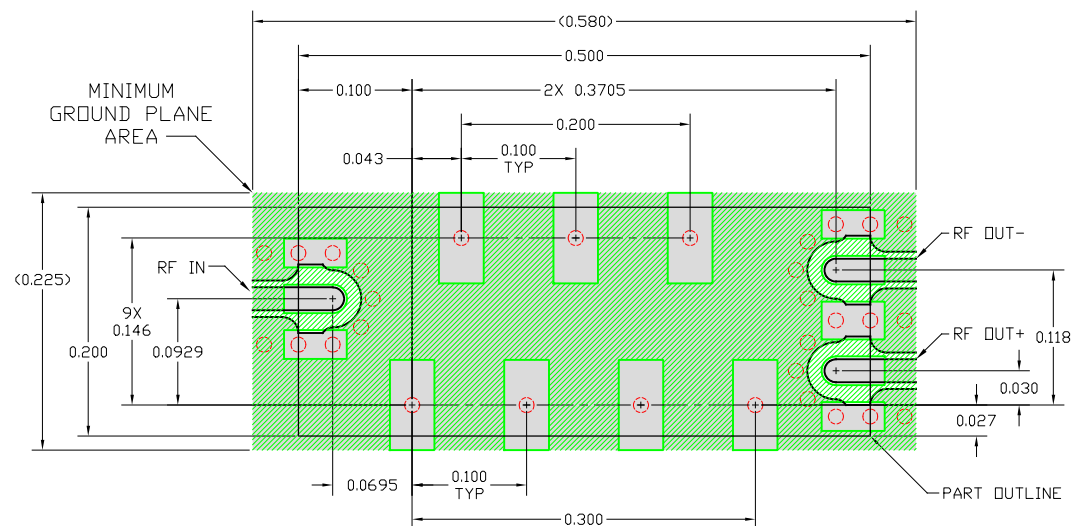


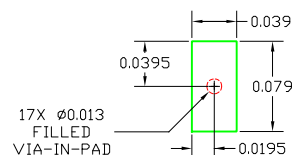
CONFIDENTIAL: THIS DOCUMENT, OR DATA DISCLOSED HEREIN, IS NOT TO BE REPRODUCED, USED, OR DISCLOSED, IN WHOLE OR PART, TO ANYONE WITHOUT THE DIRECT PERMISSION OF HYPERLABS, INC.

HATCH LEGEND



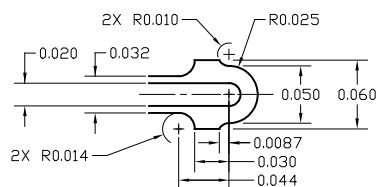
DETAIL A

Solder Mask Defined (SMD) Ground Pad



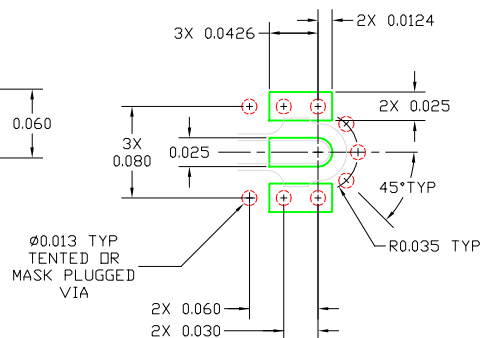
DETAIL B

RF Input/Output (GCPW) Conductor and Ground Spacing



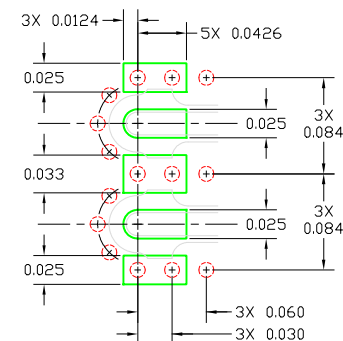
DETAIL C

RF Input Soldermask and Ground Vias




DETAIL D

RF Output Soldermask and Ground Vias

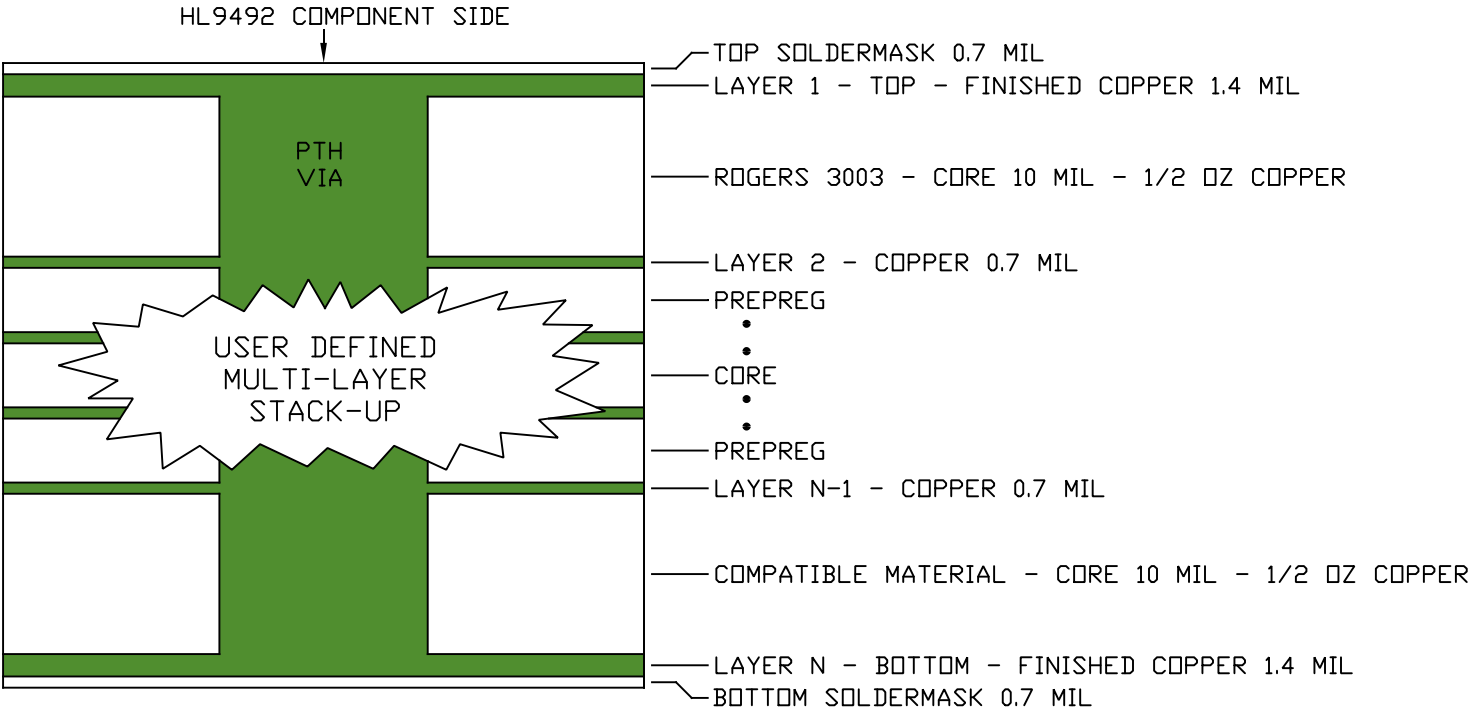


NOTES:

1. NO THIEVING ALLOWED INSIDE MINIMUM GROUND PLANE AREA.
2. ALL VIA-IN-PAD SHALL BE FILLED AND PLATED OVER TO PROVIDE A SMOOTH COPLANAR PAD - 17 PLACES. REMAINING VIAS SHALL BE TENTED OR MASK PLUGGED.
3. RECOMMENDED SURFACE FINISH: IMMERSION GOLD.
4. RF IN/OUT TRANSMISSION LINES ARE GROUNDED COPLANAR WAVEGUIDE. STITCH LAYER 1 GROUND TO LAYER 2 GROUND WITH VIA ARRAY. UNINTERRUPTED LAYER 2 GROUND PLANE MUST EXTEND TO A WIDTH OF 0.2" (MIN) UNDERNEATH RF IN/OUT CONDUCTORS.
5. TRANSMISSION LINES ARE OPTIMIZED FOR 10 MIL ROGERS 3003 DIELECTRIC.
6. SEE EXAMPLE STACK-UP ON PAGE 2.


SCALE:		MATERIAL: 0.5/0.5 0.010 CORE ROGERS 3003 (SEE NOTES)			
TOLERANCES UNLESS OTHERWISE NOTED: INCHES X.X ± 0.1 X.XX ± 0.01 X.XXX ± 0.0002 X.XXXX ± 0.0001 X* ± 1"	DRAWN BY	MC	DATE	 HYPERLABS, Inc. 13830 SW Rawhide Court, Beaverton OR 97008	
	DESIGN ENG		11/11/20		
	MATERIALS				
	PROD ENG				
	QUALITY				
TITLE: FOOTPRINT, HL9492 SMD BALUN				PART #: N/A	REV: 1
DRAWING #: 700049-1				SIZE: A	PAGE 1 OF 2

EXAMPLE STACK-UP



NOTES:

1. 6-LAYER EXAMPLE SHOWN. ANY NUMBER OF LAYERS IS POSSIBLE.
2. FOR OPTIMUM PERFORMANCE, USE 10MIL CORE ROGERS 3003 DIRECTLY UNDER HL9492. BALANCE STACK-UP WITH COMPATIBLE 10MIL CORE (E.G. RD3003, FR-4, ETC.) ON OPPOSITE SIDE OF BOARD.
3. CONTACT PCB VENDOR TO DEFINE STACK-UP FOR YOUR APPLICATION.

SCALE:		MATERIAL: 0.5/0.5 0.010 CORE ROGERS 3003 (SEE NOTES)			
TOLERANCES UNLESS OTHERWISE NOTED: INCHES X.X ± 0.1 X.XX ± 0.01 X.XXX ± 0.0002 X.XXXX ± 0.0001 X* ± 1"		INITIAL	DATE	 HYPERLABS, Inc. 13830 SW Rawhide Court, Beaverton OR 97008	
		DRAWN BY	MC		
		DESIGN ENG			
		MATERIALS			
		PROD ENG			
		QUALITY		TITLE: FOOTPRINT, HL9492 SMD BALUN	
				PART #: N/A	REV: 1 SIZE: A
				DRAWING #: 700049-1	PAGE 2 OF 2